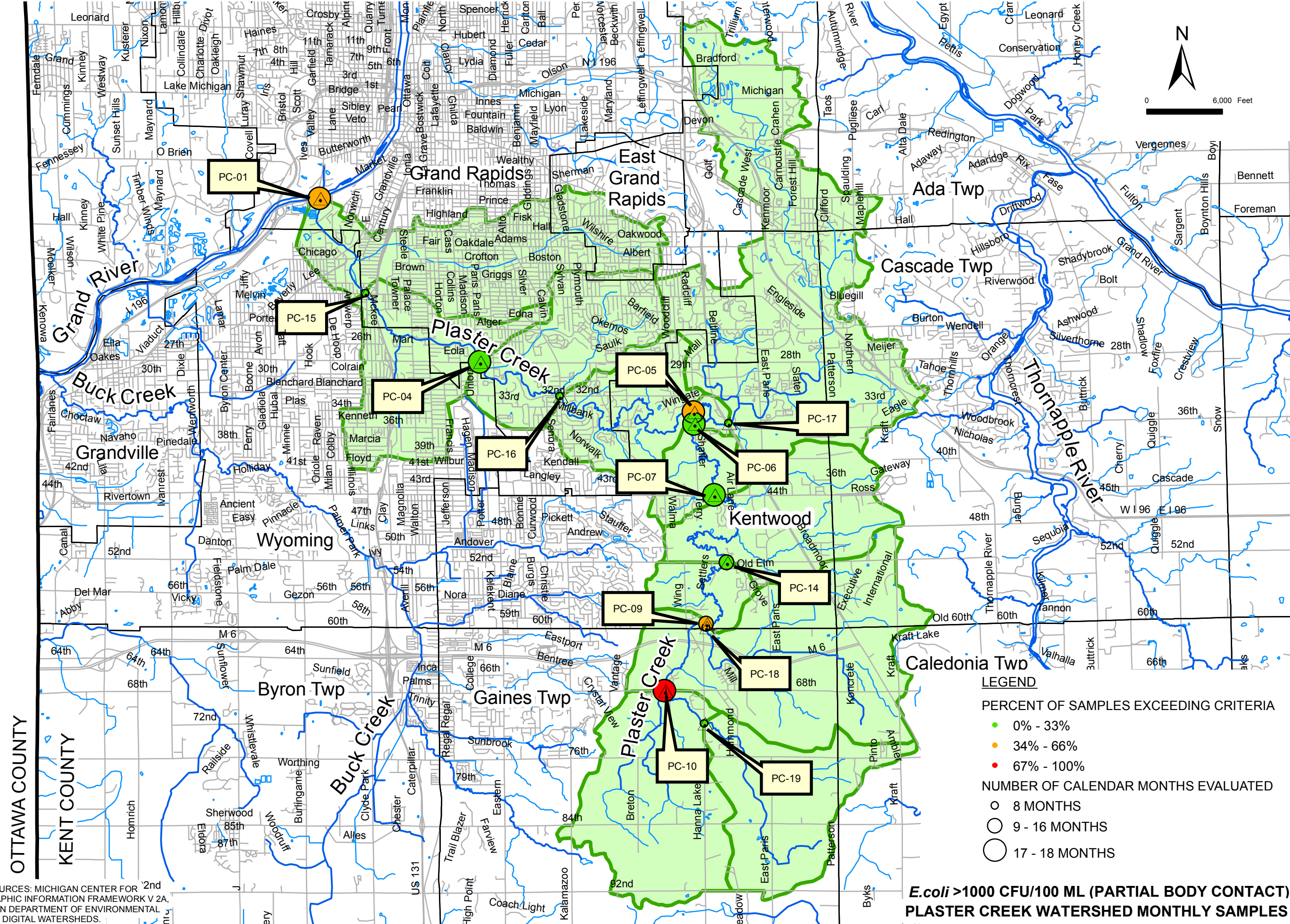


PLOT INFO: D:\WORK\02408EC MAP\_DOCUMENT\PLASTER\_ECOL\_DATA DATE: 10/25/2006 USER: MCL

DATA SOURCES: MICHIGAN CENTER FOR 2nd GEOGRAPHIC INFORMATION FRAMEWORK V 2A, MICHIGAN DEPARTMENT OF ENVIRONMENTAL QUALITY DIGITAL WATERSHEDS.



OTTAWA COUNTY  
KENT COUNTY

**LEGEND**

PERCENT OF SAMPLES EXCEEDING CRITERIA

- 0% - 33%
- 34% - 66%
- 67% - 100%

NUMBER OF CALENDAR MONTHS EVALUATED

- 8 MONTHS
- 9 - 16 MONTHS
- 17 - 18 MONTHS

**E. coli >1000 CFU/100 ML (PARTIAL BODY CONTACT)  
PLASTER CREEK WATERSHED MONTHLY SAMPLES**

**Fisbeck, Thompson, Carr & Huber**  
Engineers • Scientists • Architects

Grand Rapids, Michigan (616) 575-3824

© Copyright 2004 All Rights Reserved

**fic&h**

**Grand Valley Metropolitan Council**  
Muskegon, Ottawa, Kent, Montcalm,  
Ionia, Barry, and Eaton Counties, Michigan

Lower Grand River Watershed  
E. coli Implementation Project

PROJECT NO.  
G02408EC

FIGURE NO.  
**6**