

# Calvin College Governance Structure

C.R.C.N.A. Synod

Board of Trustees

Executive Committee

President

Provost / Vice President for Academics

Vice President for Advancement

Vice President for Administration, Finance, and Information Services

Vice President for Enrollment Management

Vice President for Student Life

Faculty Senate

*Intensive Governance Committees*

Core Curriculum	Professional Status
Educational Policy	Teacher Education

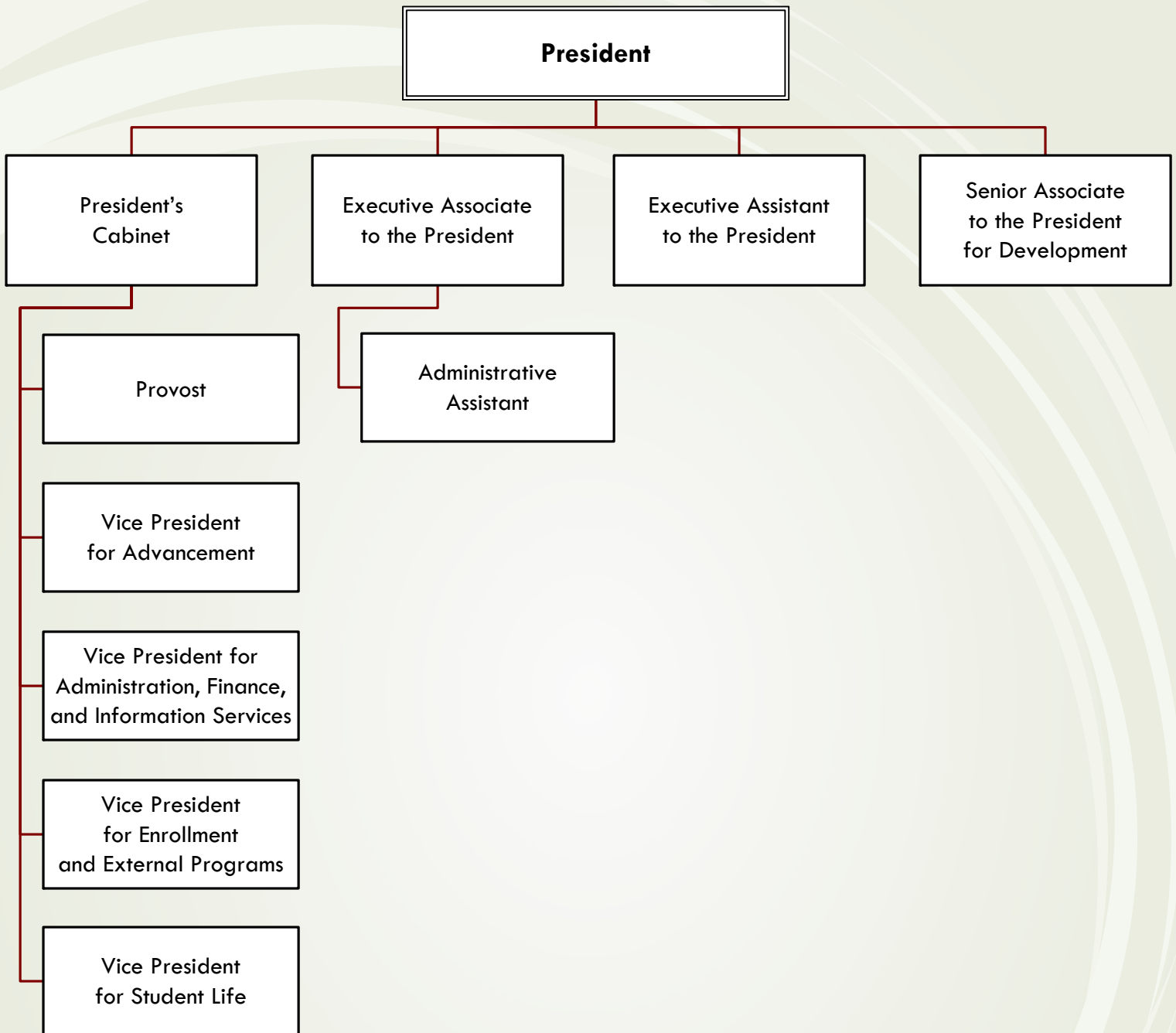
*Faculty Governance Committees*

Academic Advising	Hekman Library
Academic Standards	Information Services
Animal Care and Use	Institutional Biosafety
Assessment	Institutional Review Board
Athletics	Interim Term
Chapel	Multicultural Affairs
Cross-Cultural Engagement	Off-Campus Programs
Coordination	Planning and Priorities
Enrollment Management	Rhetoric Across the Curriculum
Environmental Health and Safety	Scholarships and Financial Aid
Environmental Stewardship	Student Discipline
Faculty Development	Student Life
Gender Equity	
Governance	

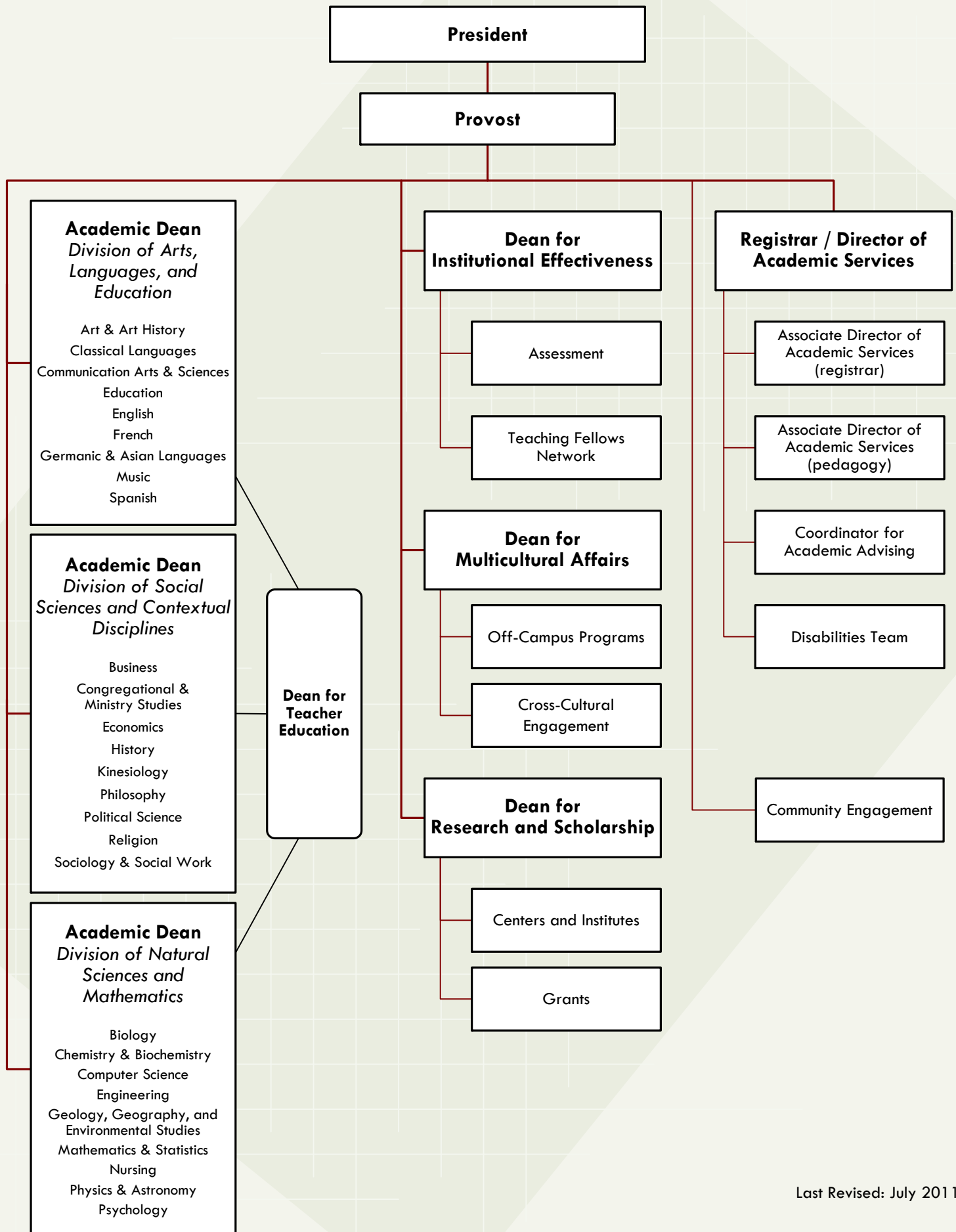
*Governing Boards*

Calvin Center for Christian Scholarship  
 Calvin Institute for Christian Worship  
 Center for Social Research  
 Ecosystem Preserve  
 H. Henry Meeter Center for Calvin Studies  
 Kuiper Seminar  
 Kuyers Institute for Christian Teaching and Learning  
 Mellema Program in Western American Studies  
 Nagel Institute for the Study of World Christianity  
 Paul B. Henry Institute for the Study of Christianity and Politics  
 Seminars in Christian Scholarship  
 Spoelhof Family Institute for Christian Leadership in Business  
 Van Lunen Center for Executive Management in Christian Schools

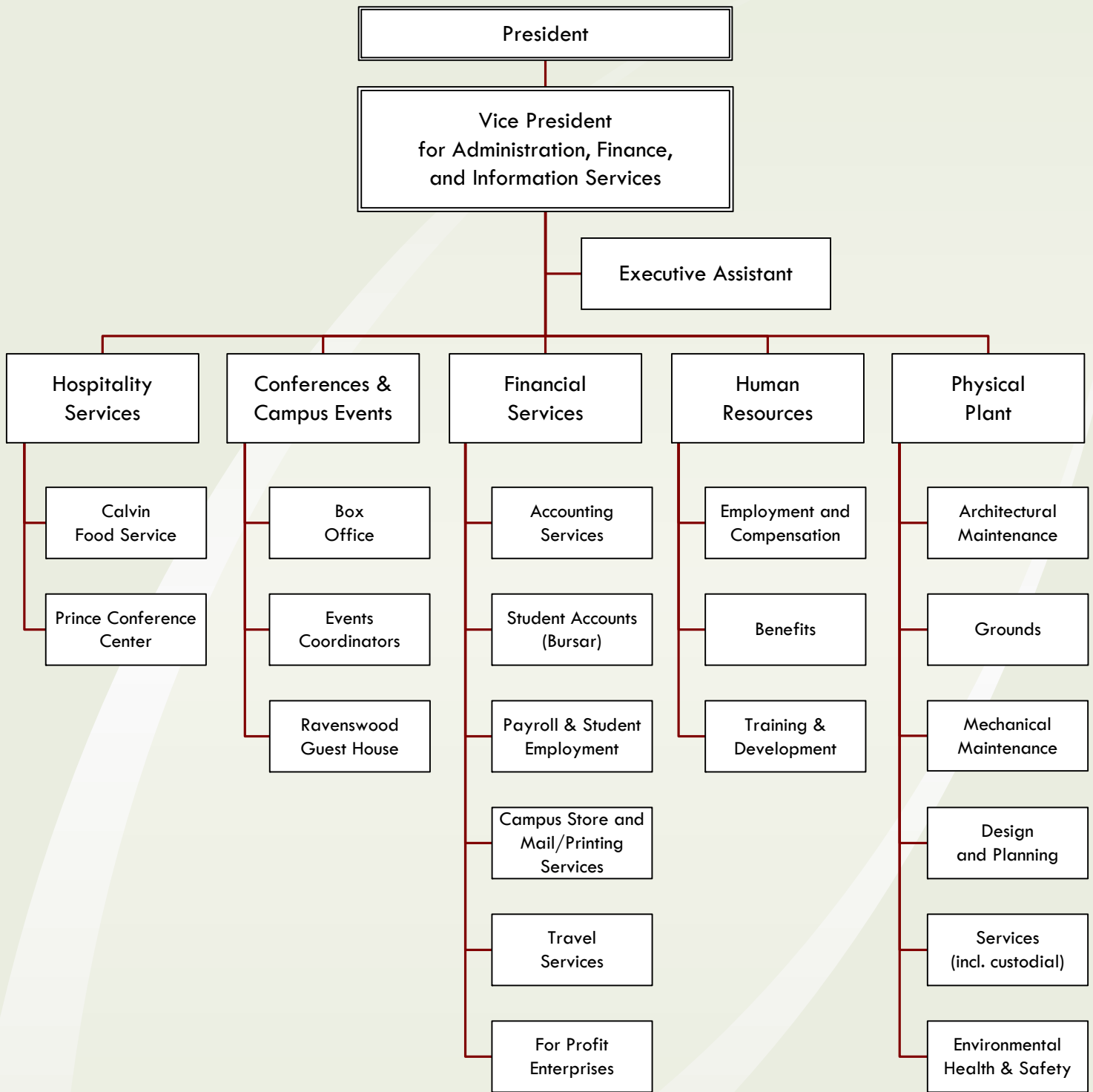
# President's Office Organizational Chart



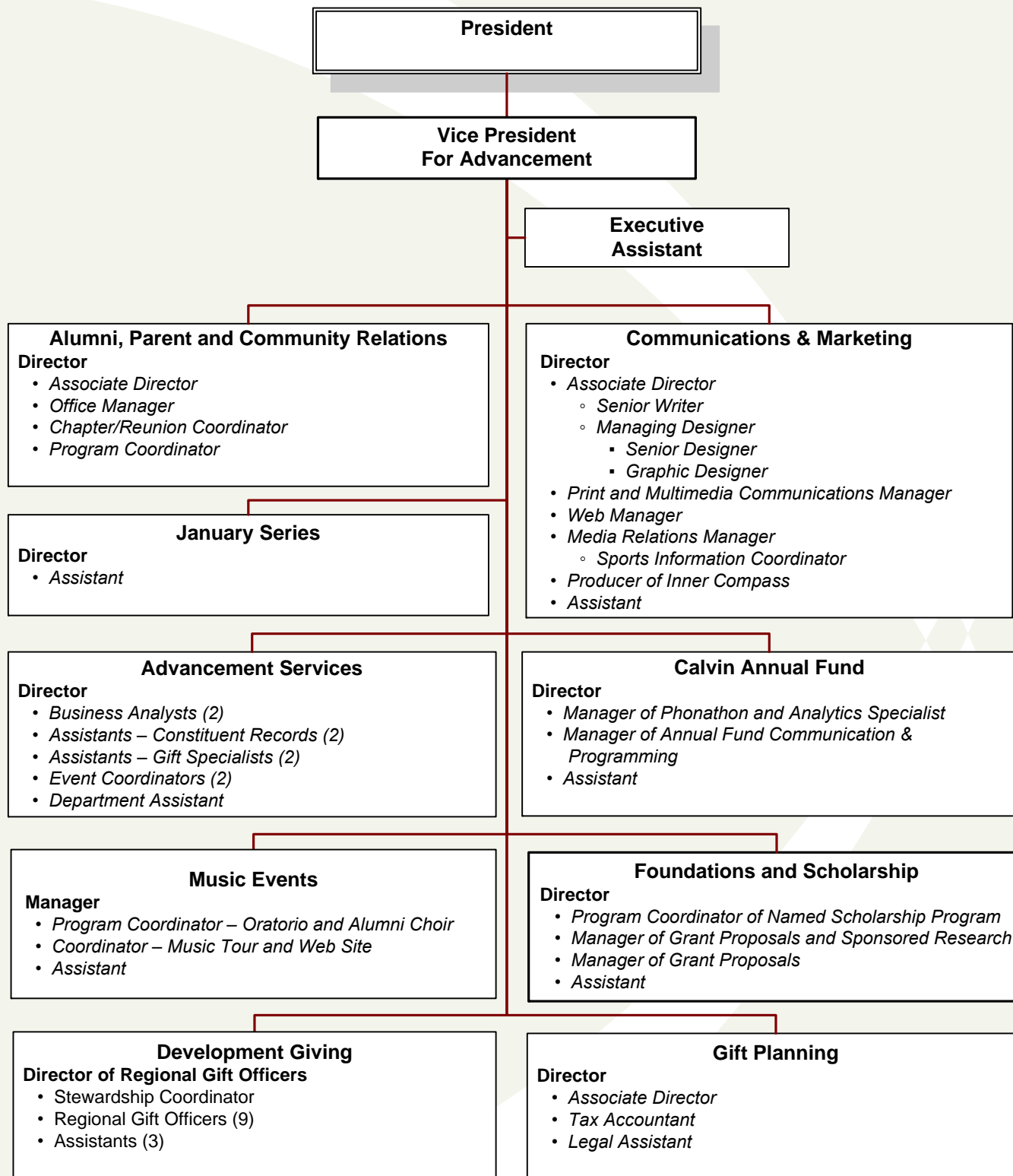
# Calvin College: Academic Affairs Division



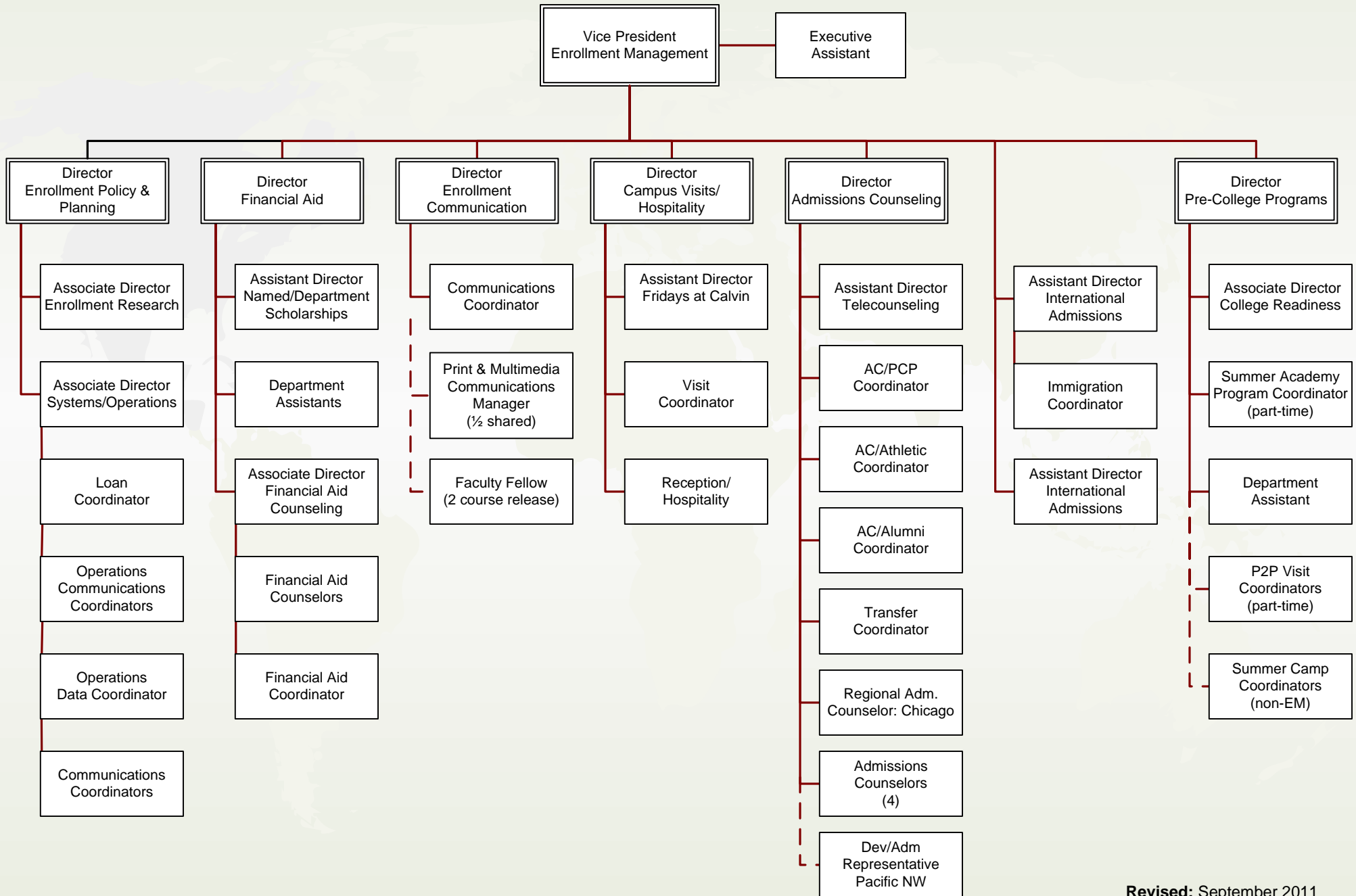
# Calvin College: Administration and Finance Division



# Calvin College: Advancement Division

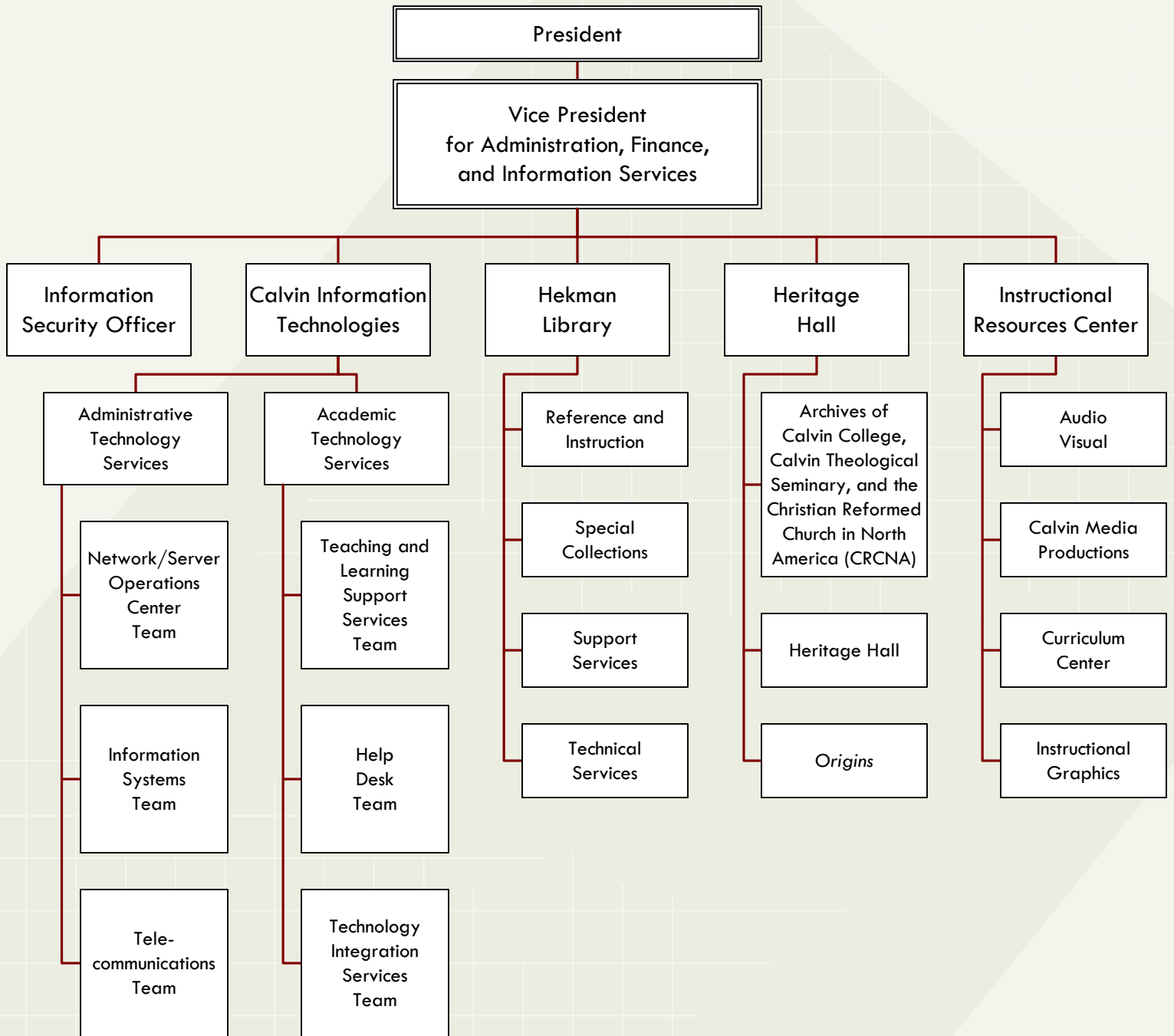


# Enrollment Management Division Organizational Chart



Revised: September 2011

# Calvin College: Information Services Division



# Student Life Organizational Chart

