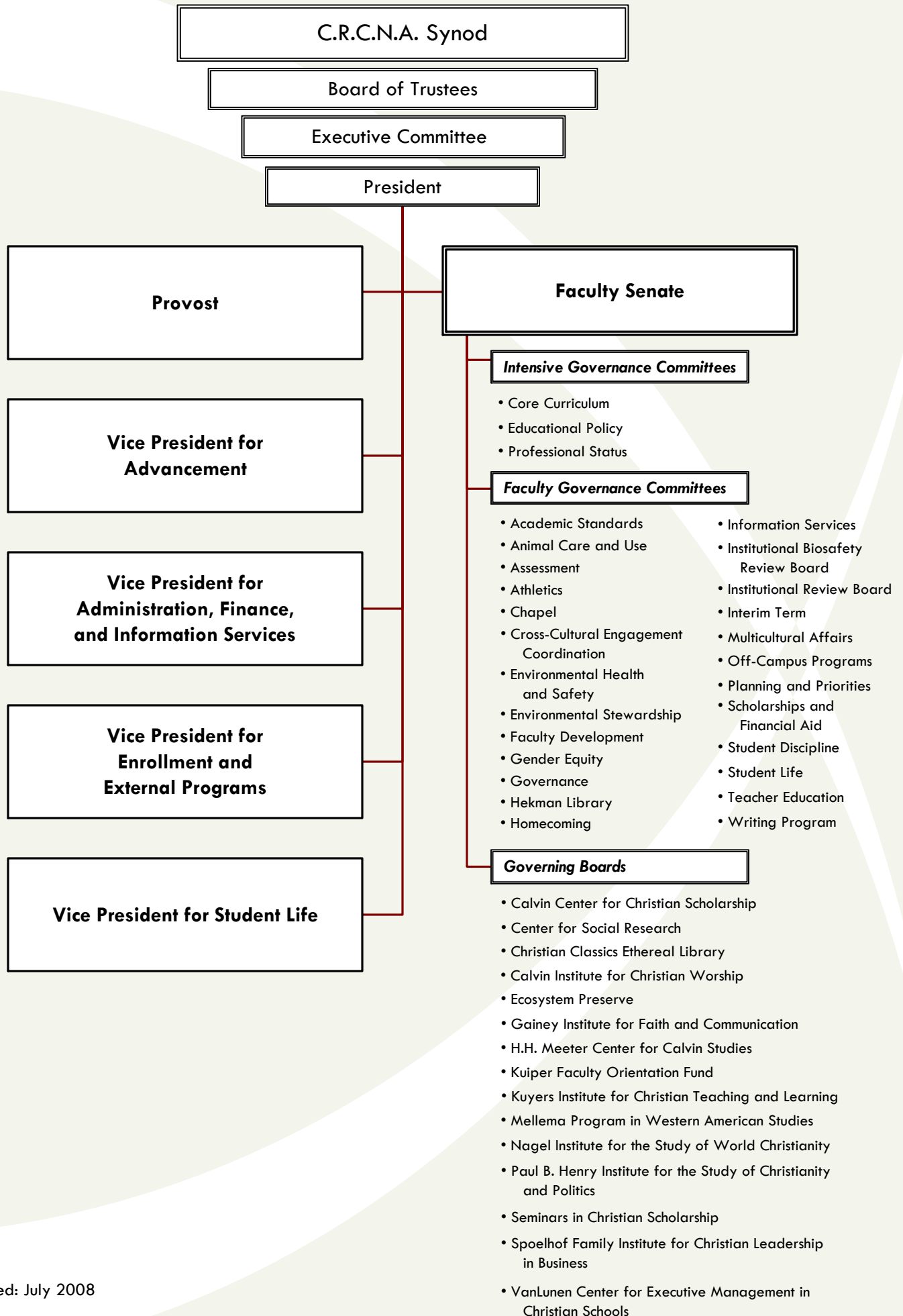
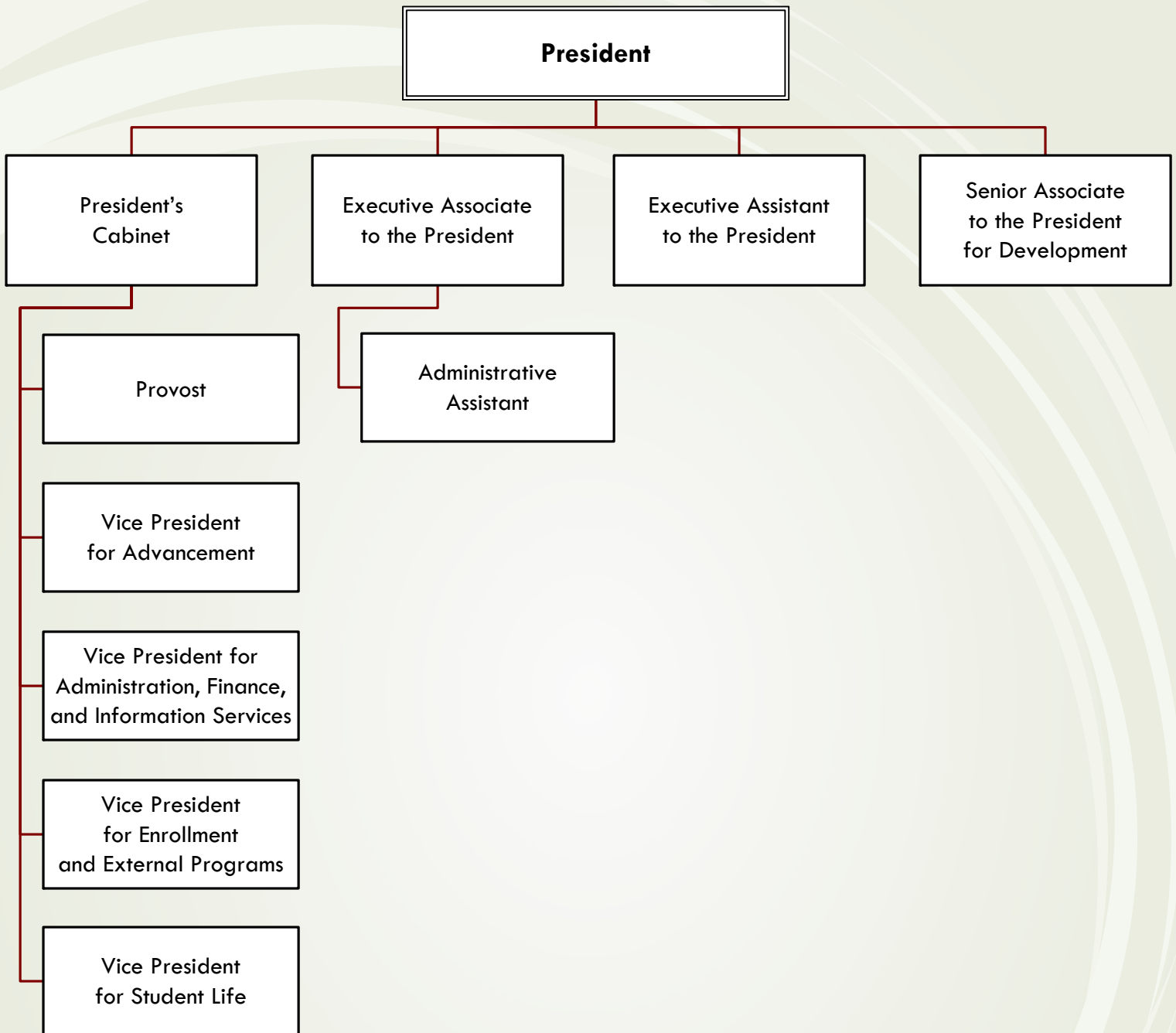


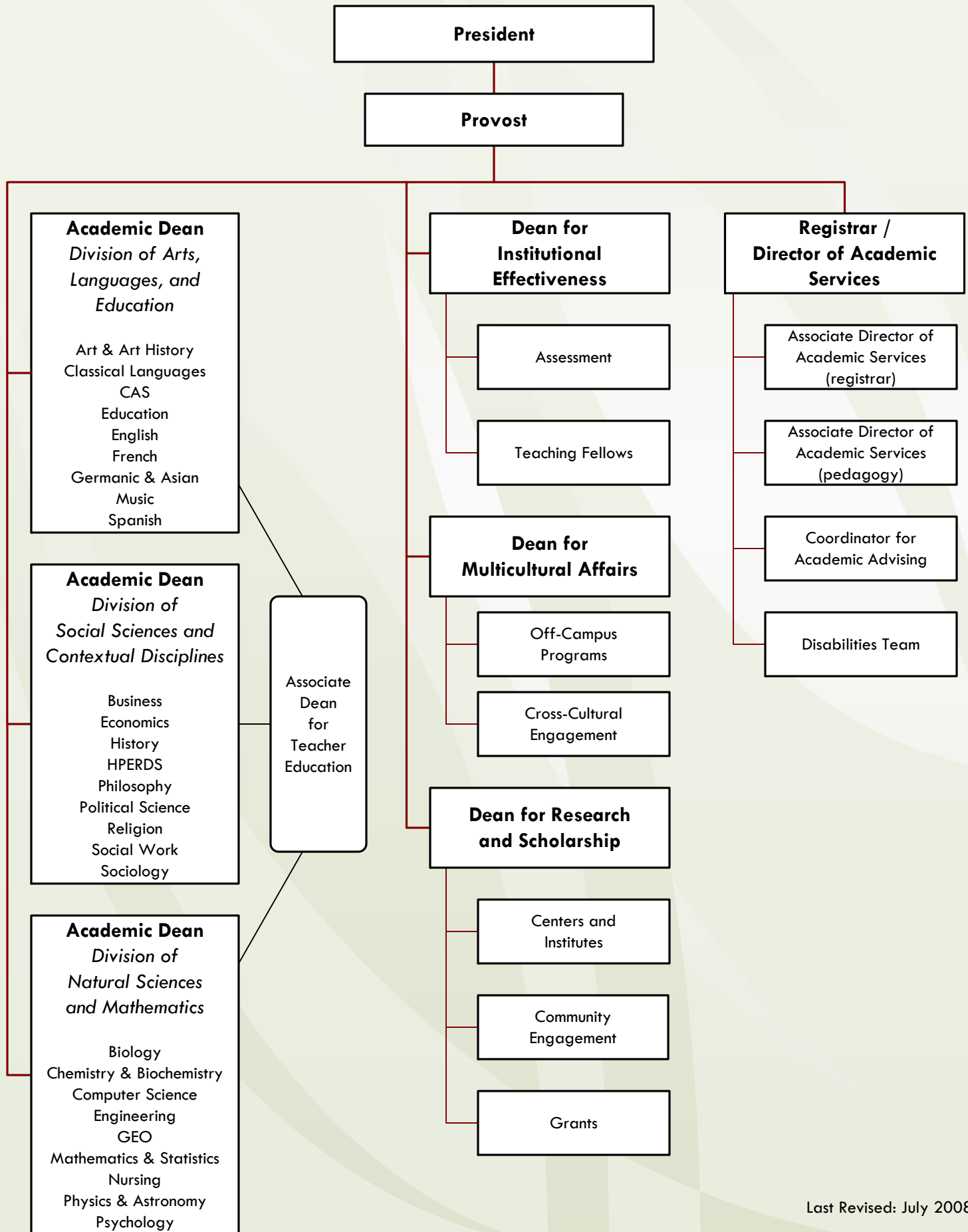
Calvin College Governance Structure



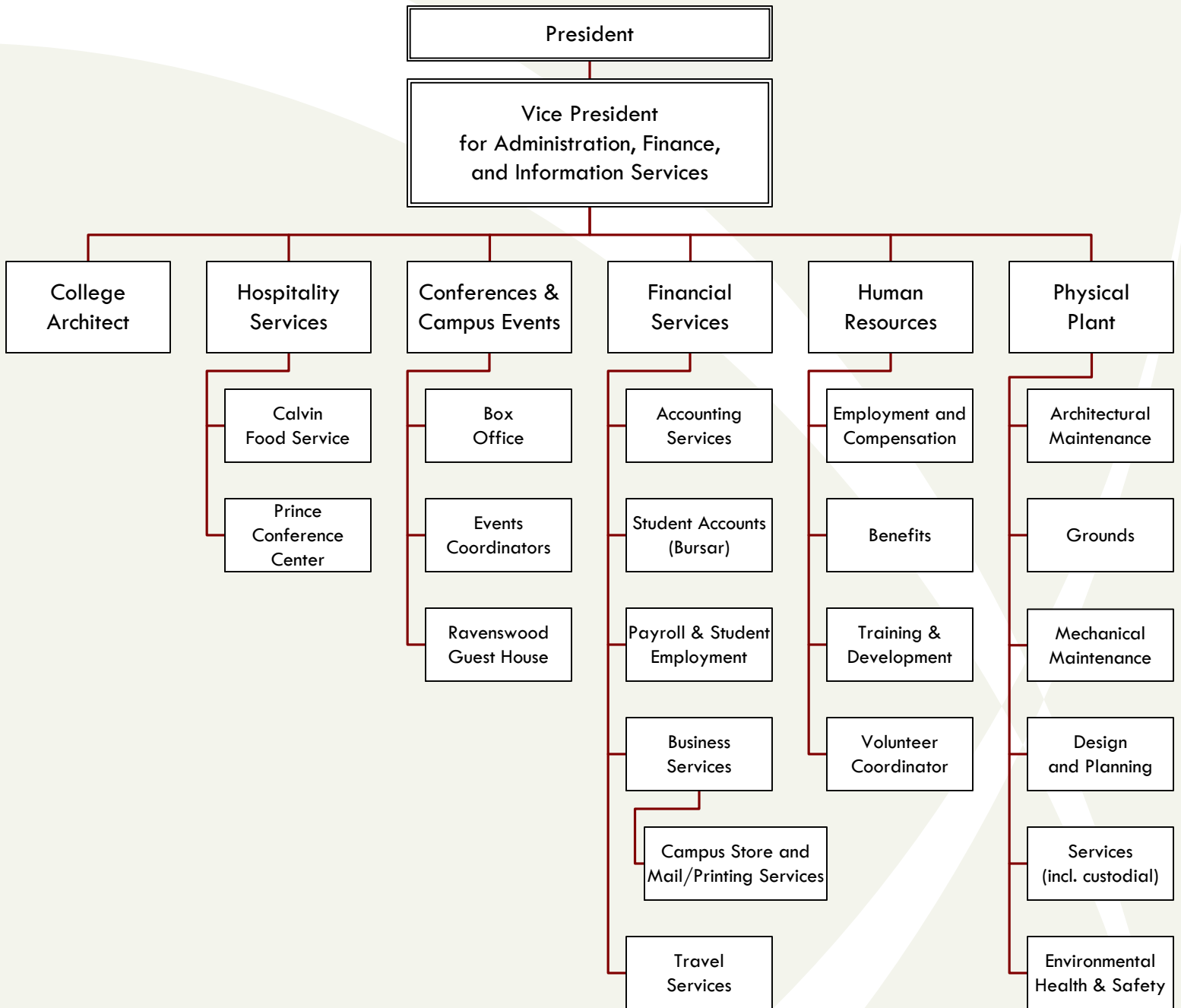
President's Office Organizational Chart



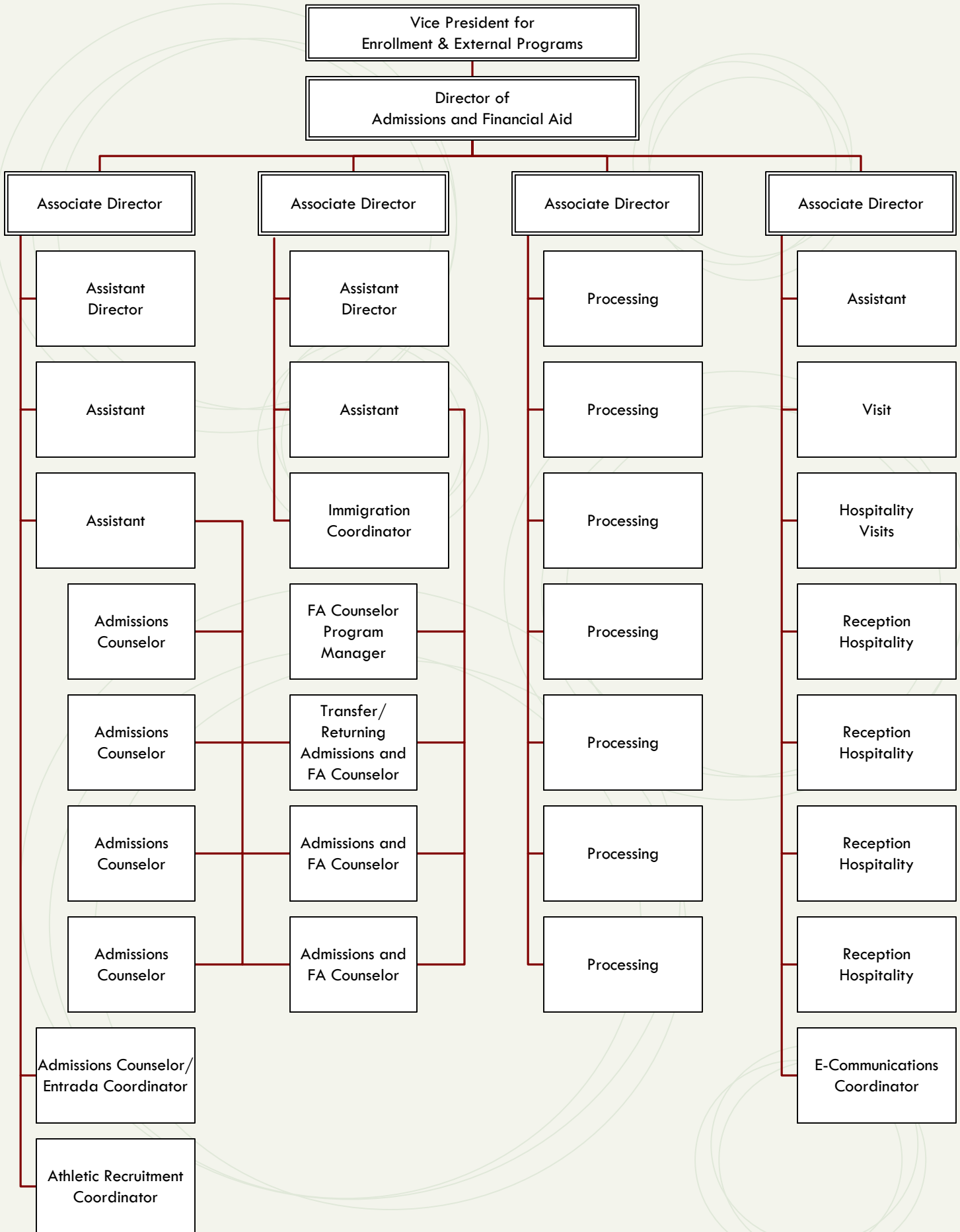
Calvin College: Academic Affairs Division



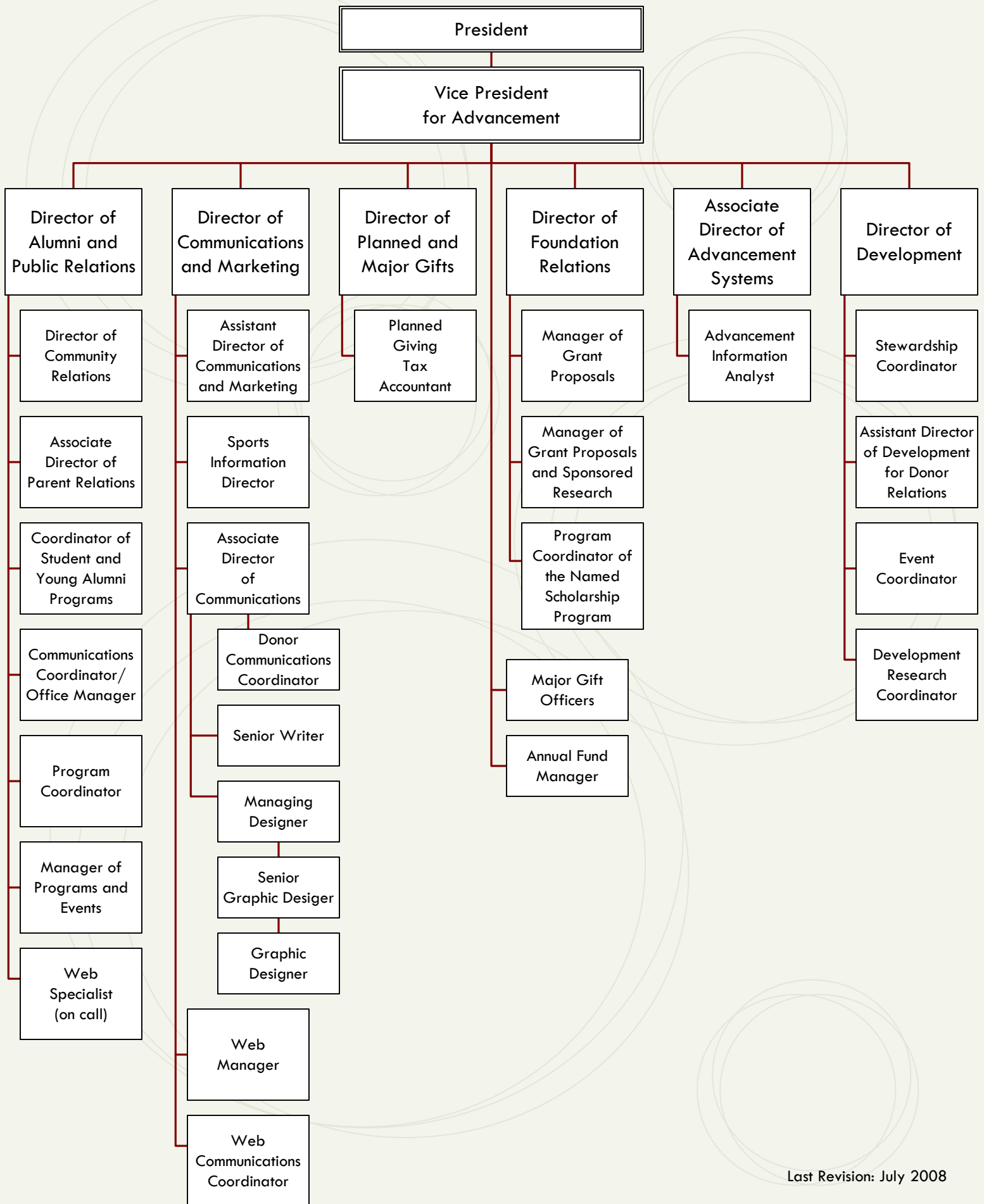
Calvin College: Administration and Finance Division



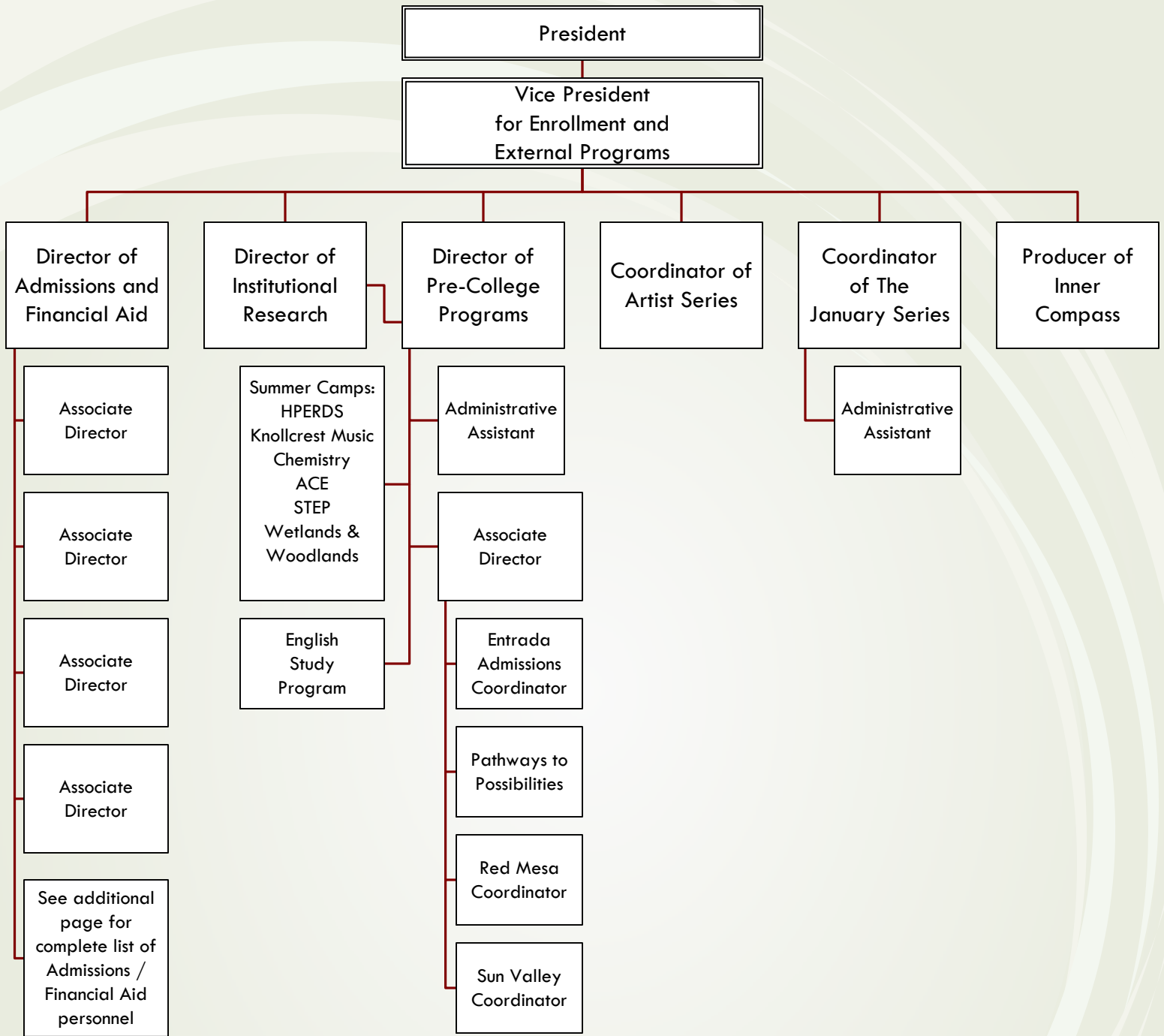
Calvin College: Office of Admissions and Financial Aid



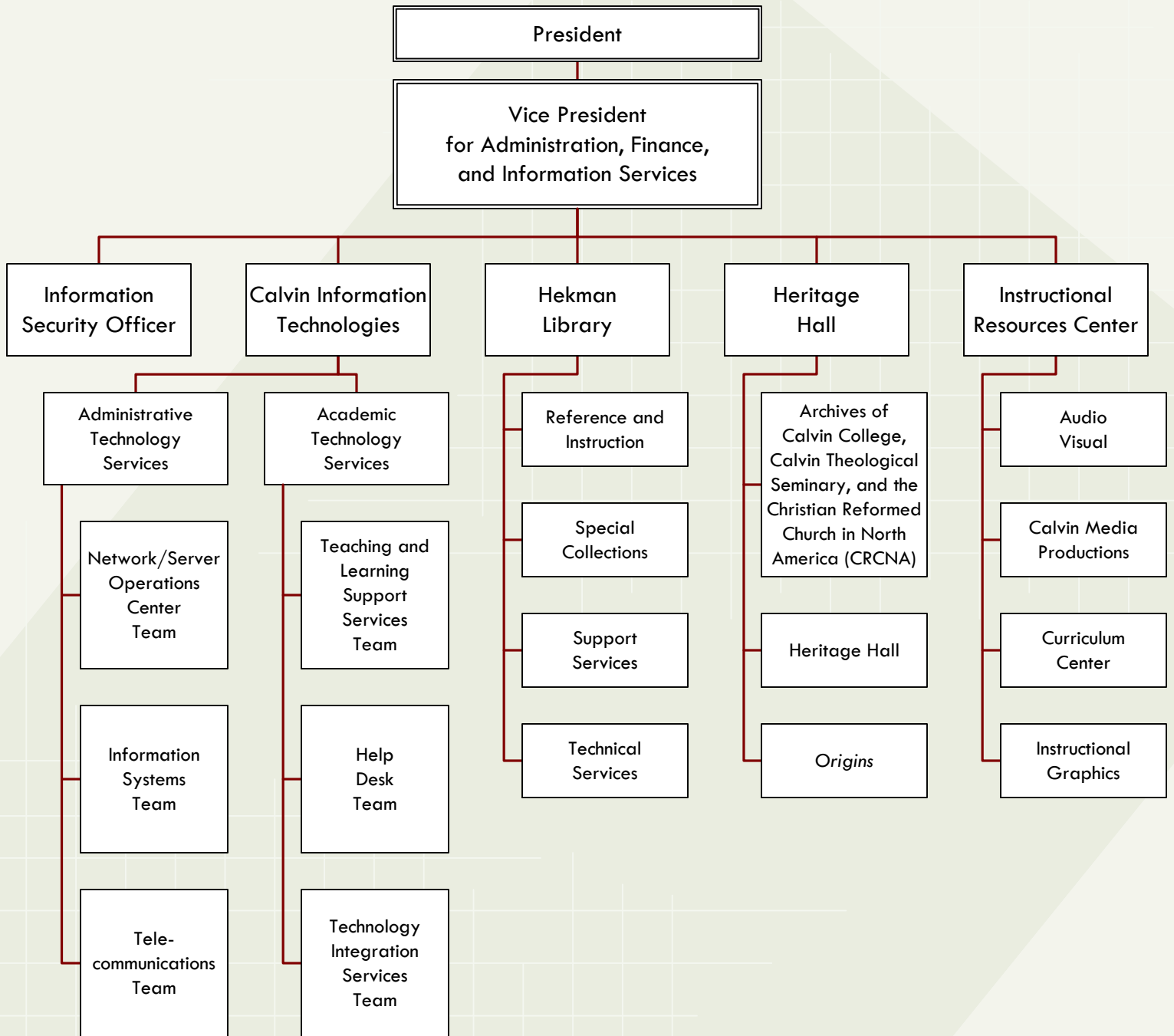
Calvin College: Advancement Division



Calvin College: Enrollment and External Programs Division



Calvin College: Information Services Division



Calvin College: Student Life Division

PRESIDENT

**Vice President
for Student Life**

BROENE COUNSELING CENTER

Director

- Counselors (6)
- Prelude Coordinator (0.5)

JUDICIAL AFFAIRS

Dean

- Judicial Advisor (0.5)

CAMPUS SAFETY

Director

- Associate Director*
Operations Manager
- Patrol Supervisors (5)
 - Student Officers (45)

RESIDENCE LIFE

Dean

- Associate Dean*
- Resident Directors (7)
 - Assistant Resident Director
- Associate Dean*
- Knollcrest East Area Coordinator
—Community Life Coordinator
 - Mosaic Coordinator

CAREER DEVELOPMENT

Director

- Career Counselors (2.5)
- Manager of Experiential Education
—Experiential Education Coordinator

STUDENT DEVELOPMENT

Dean

- Associate Dean*
- Project Neighborhood Mentors (4)
- Assistant Dean for International Student Development*
Assistant Dean for Multicultural Student Affairs
Director of Student Activities
- Research & Program Coordinator
 - Coordinator of Student Activities & Organizations
- Director of Service Learning Center*
- Associate Director (open)

CHRISTIAN FORMATION

Campus Chaplain

- Associate Chaplains (3)*
- Chapel Coordinator
 - LOFT Coordinator
 - Mentoring Coordinator
 - Spiritual Director for Prayer
 - Coordinator for Off-Campus
Programs & Knollcrest East

HEALTH SERVICES

Director

- Nurses (2.8)
- Nurse Practitioners (2.25)
- Immunizations & Insurance Coordinator

VICE PRESIDENT'S OFFICE

- Project Coordinator
- Web Communications Manager