

Treble Clef Baritone

① Wagner/Cailliet, Elsa's Procession to the Cathedral

$\text{♩} = 52-56$

Musical score for Wagner/Cailliet, Elsa's Procession to the Cathedral, Treble Clef Baritone part. The score consists of three staves of music. The first staff begins with a treble clef, a key signature of one flat (B-flat), and a common time signature. The tempo is marked $\text{♩} = 52-56$. The second staff is marked *ff espr.* and features a **Soli** instruction with a circled 9. The third staff is marked *allargando* and features a circled 10. The music includes various rhythmic values, including dotted notes and eighth notes, and is characterized by a melodic line with a descending contour.

② Jager, Third Suite, Mvt. 1

$\text{♩} = 120$

Musical score for Jager, Third Suite, Mvt. 1, Treble Clef Baritone part. The score consists of six staves of music. The first staff begins with a treble clef, a key signature of one sharp (F#), and a 4/4 time signature. The tempo is marked $\text{♩} = 120$. The music is characterized by a rhythmic pattern of eighth notes and triplets. The second staff is marked *p cresc.*. The third staff is marked *mf*. The fourth staff is marked *f*. The fifth staff is marked *ff* and features a circled 3. The sixth staff is marked *ff* and features a circled 3. The music includes various rhythmic values, including dotted notes and eighth notes, and is characterized by a melodic line with a descending contour.

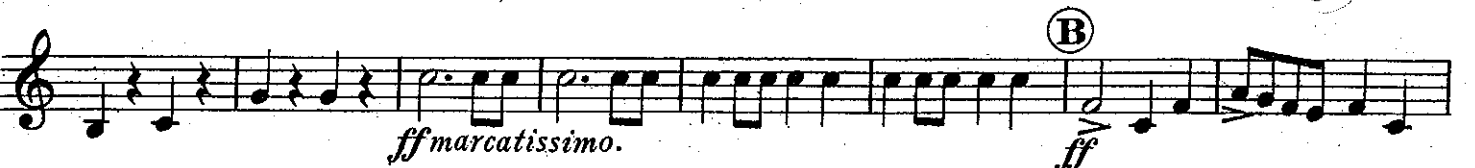
③ Jager, Third Suite, Mvt. 3

$\text{♩} = 128$



④ Saint-Saëns/Lake, Marche Militaire Francaise

$\text{♩} = 132$



⑤ Dello Joio, Scenes from The Louvre, Mt. 1

$\text{♩} = 76$

Musical score for Mt. 1, measures 30-45. The score is written in treble clef with a key signature of two sharps (F# and C#) and a 6/8 time signature. It begins with a dynamic marking of *ff*. Measure 30 is circled. A first ending bracket labeled '1' spans measures 35-36. Measure 35 is circled, and the dynamic marking *ff sempre* is present. Measure 40 is circled. A second ending bracket labeled '2' spans measures 44-45. Measure 45 is circled, and the dynamic marking *rall.* is present. The piece concludes with a double bar line.

Mt. 5

$\text{♩} = 92$

Musical score for Mt. 5, measures 20-25. The score is written in treble clef with a key signature of two sharps (F# and C#) and a 4/4 time signature. It begins with a dynamic marking of *f*. Measure 20 is circled. The dynamic marking *ff sentito* is present. Measure 25 is circled, and the dynamic marking *ff* is present. The piece concludes with a double bar line.

6 Sullivan/Mackerras, Pineapple Poll, Mvt. 1

Allegro vivace (♩ = 132)

B. Trom.

Musical score for B. Trombone, measures 1-10. The score is in 2/4 time with a key signature of one sharp (F#). It features a rhythmic pattern of eighth and sixteenth notes. Dynamics include *f*, *p*, and *sf*. A first ending bracket is shown above measures 9 and 10.

(♩ = 132)

Musical score for B. Trombone, measures 11-15. The score continues with eighth and sixteenth notes. Dynamics include *mp* and *ff*. A double bar line is present above measure 14. Measure numbers 11, 12, and 15 are indicated in boxes.

♩ = 104

7 Arnold/Paynter, Four Scottish Dances, Mvt. 1

Musical score for B. Trombone, measures 1-4. The score is in 2/4 time with a key signature of two sharps (D#). It features a rhythmic pattern of eighth and sixteenth notes. Dynamics include *ff molto marcato*.

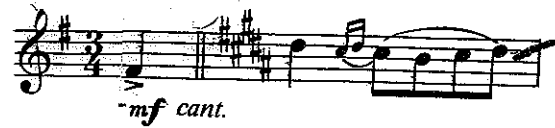
Musical score for B. Trombone, measures 5-8. The score continues with eighth and sixteenth notes. Dynamics include *ff*.

Musical score for B. Trombone, measures 9-12. The score continues with eighth and sixteenth notes. Dynamics include *ff* and *accel molto*.

Musical score for B. Trombone, measures 13-16. The score continues with eighth and sixteenth notes. Dynamics include *Pesante*, *3*, *div.*, and *unis.*

⑧ Arnold/Paynter, Four Scottish Dances, Mvt. 3

$\text{♩} = 96$



⑨ Copland, An Outdoor Overture

$\text{♩} = 132$

