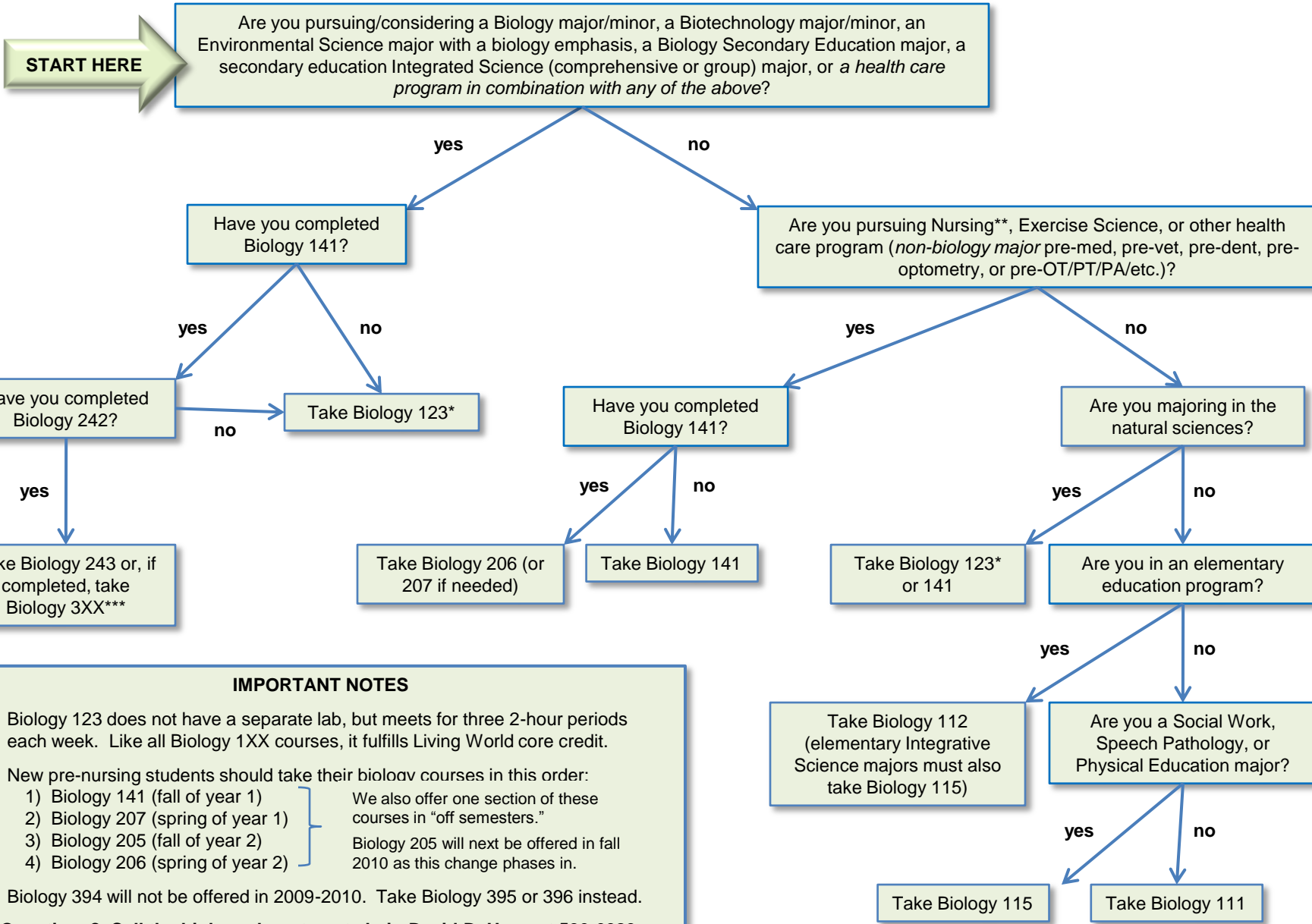


# Which Biology Course Should I Take? A Decision Key for Returning Students



## IMPORTANT NOTES

- \* Biology 123 does not have a separate lab, but meets for three 2-hour periods each week. Like all Biology 1XX courses, it fulfills Living World core credit.
  - \*\* New pre-nursing students should take their biology courses in this order:
 

<ol style="list-style-type: none"> <li>1) Biology 141 (fall of year 1)</li> <li>2) Biology 207 (spring of year 1)</li> <li>3) Biology 205 (fall of year 2)</li> <li>4) Biology 206 (spring of year 2)</li> </ol>	} We also offer one section of these courses in "off semesters." Biology 205 will next be offered in fall 2010 as this change phases in.
--	---
  - \*\*\* Biology 394 will not be offered in 2009-2010. Take Biology 395 or 396 instead.
- Questions? Call the biology department chair, David DeHeer, at 526-6083.**